

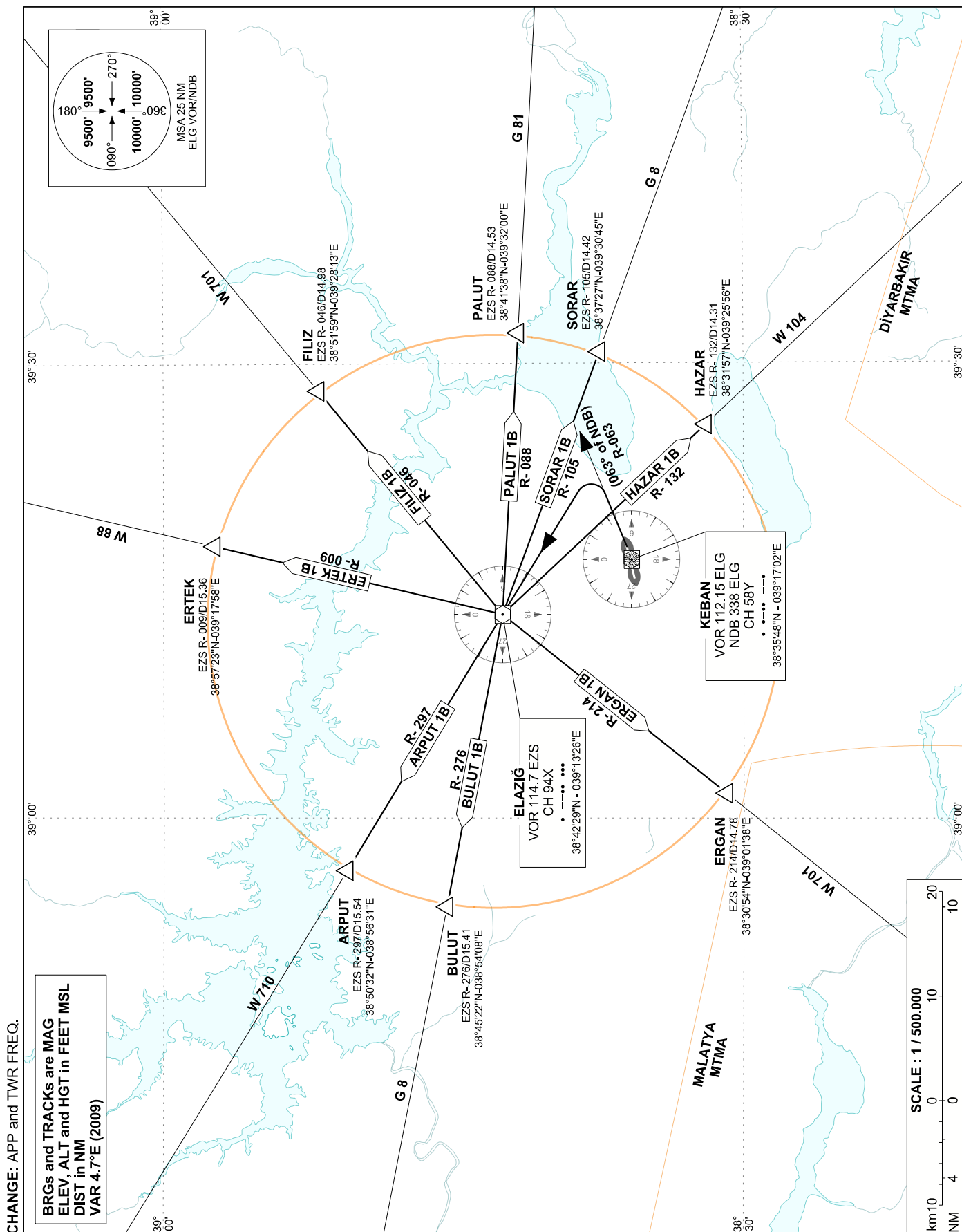
STANDARD DEPARTURE
CHART INSTRUMENT (SID)
ICAO

TRANSITION ALTITUDE
10 000 FT

APP : 118.950 - 257.8
TWR : 118.950 - 257.8 - 278.55

ELAZIĞ

RWY 07



**ELAZIĞ AIRPORT STANDARD INSTRUMENT DEPARTURE ROUTES
FOR RWY 07
(BASED ON ELG VOR/NDB AND EZS VOR)**

After take-off intercept R-063 of ELG VOR (063° of ELG NDB), climb until passing 5700 FT then left turn to proceed and cross EZS VOR, then;

HAZAR 1B
(HAZAR ONE BRAVO) : Left turn and intercept EZS R-132 to proceed HAZAR point and establish AWY.

ERGAN 1B
(ERGAN ONE BRAVO) : Left turn and intercept EZS R-214 to proceed ERGAN point and establish AWY.

BULUT 1B
(BULUT ONE BRAVO) : Intercept EZS R-276 to proceed BULUT point and establish AWY.

ARPUT 1B
(ARPUT ONE BRAVO) : Intercept EZS R-297 to proceed ARPUT point and establish AWY.

ERTEK 1B
(ERTEK ONE BRAVO) : Right turn and intercept EZS R-009 to proceed ERTEK point and establish AWY.

FILIZ 1B
(FILIZ ONE BRAVO) : Right turn and intercept EZS R-046 to proceed FILIZ point and establish AWY.

PALUT 1B
(PALUT ONE BRAVO) : Right turn and intercept EZS R-088 to proceed PALUT point and establish AWY.

SORAR 1B
(SORAR ONE BRAVO) : Right turn and intercept EZS R-105 to proceed SORAR point and establish AWY.

NOTE 1: Minimum climb gradient 5% (304 FT/NM) until passing EZS VOR.