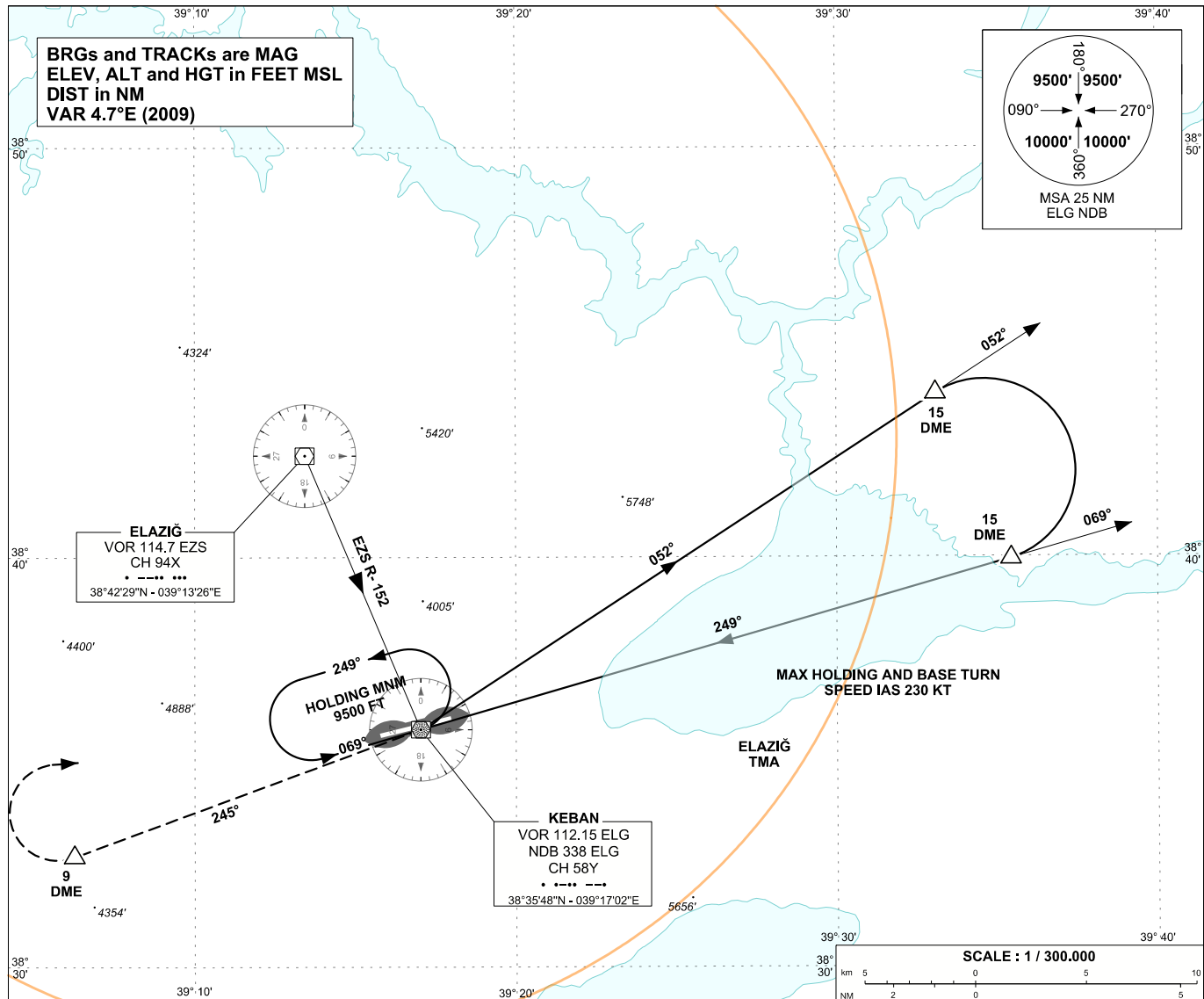


ELAZIĞ

NDB/DME RWY 25

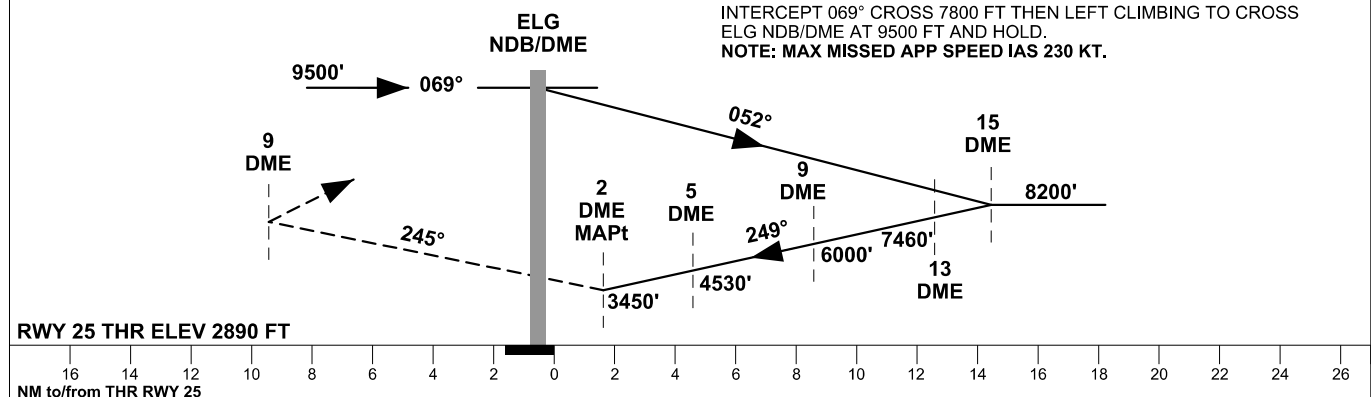
| | | | |
|------|--------------------------|---------------------|-----------|
| APP | 118.950 - 257.8 | AD ELEV | 2927 FT |
| TWR | 118.950 - 257.8 - 278.55 | TRANSITION ALTITUDE | 10 000 FT |
| ATIS | - | | |

INSTRUMENT
APPROACH
CHART - ICAO



MISSED APPROACH

CLIMB ON ELG NDB 245° TURN RIGHT AT 9 DME TO CROSS NDB/DME AT 9500 FT AND HOLD. IF UNABLE TO REACH 9500 FT AT ELG NDB/DME INTERCEPT 069° CROSS 7800 FT THEN LEFT CLIMBING TO CROSS ELG NDB/DME AT 9500 FT AND HOLD.
NOTE: MAX MISSED APP SPEED IAS 230 KT.



| OCA (H) | A | B | C | D |
|----------------------|-----------------|-----------------|-----------------|---|
| Straight-in Approach | 3450' (560') | | | |
| Circling | 4500' (1573') | 4800' (1873') | 5700' (2773') | |
| | | | | |
| | | | | |