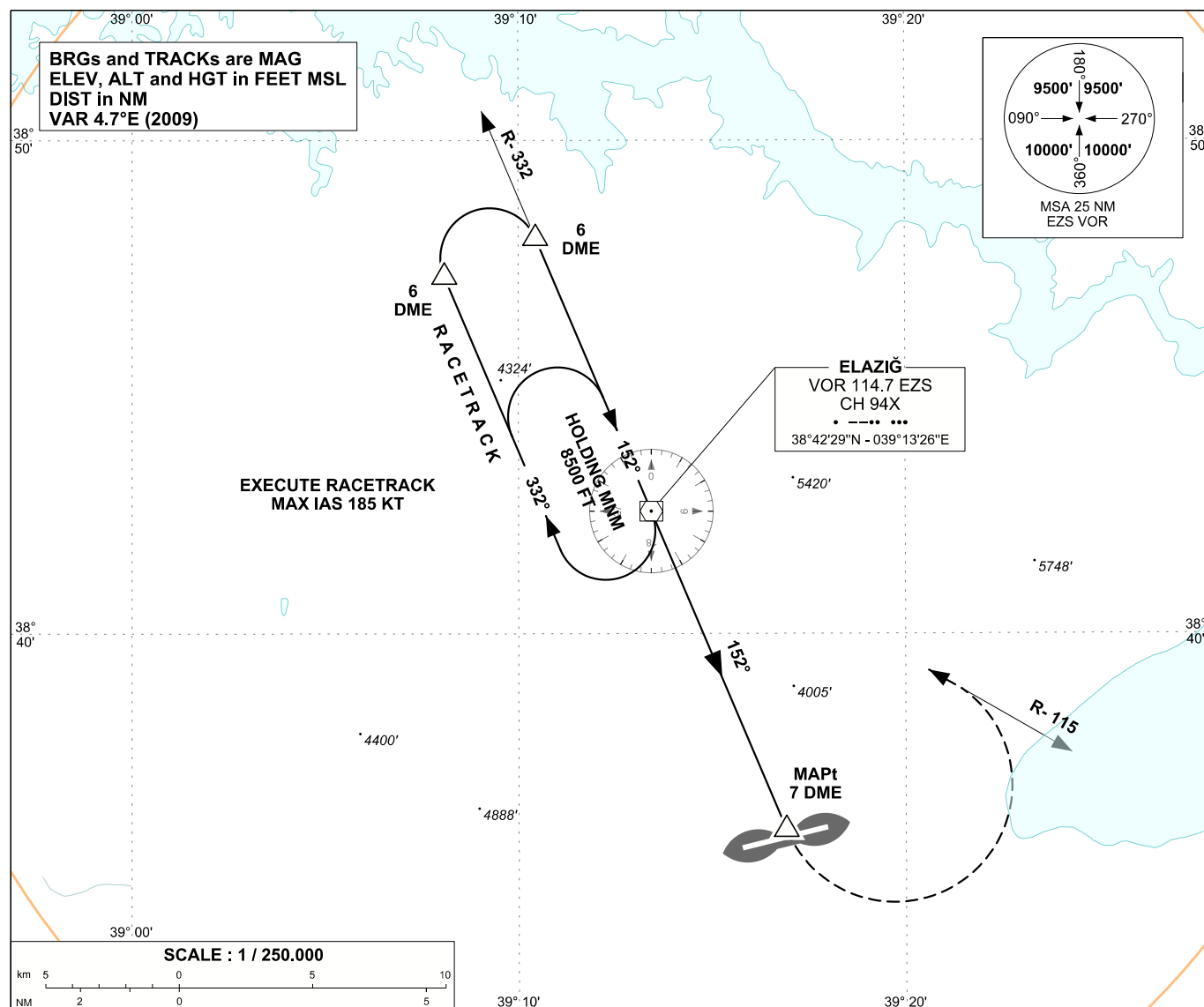
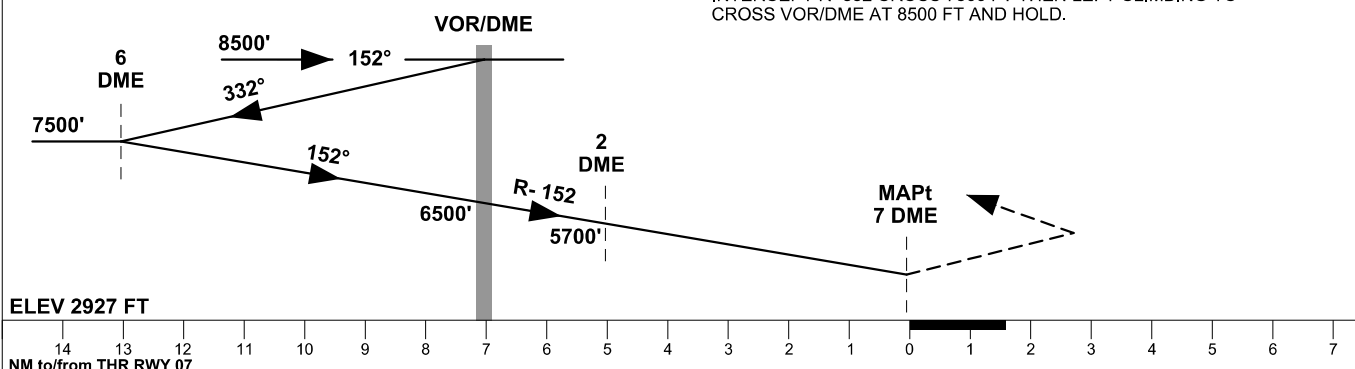


APP	118.950 - 257.8	AD ELEV	2927 FT
TWR	118.950 - 257.8 - 278.55	TRANSITION ALTITUDE 10 000 FT	
ATIS	-		

VOR/DME



MISSED APPROACH
TURN LEFT INTERCEPT R- 115 CLIMBING TO CROSS VOR/DME
AT 8500 FT AND HOLD. IF UNABLE TO REACH 8500 FT AT VOR/DME
INTERCEPT R- 332 CROSS 7300 FT THEN LEFT CLIMBING TO
CROSS VOR/DME AT 8500 FT AND HOLD.



OCA (H)	A	B	C	D
Straight-in Approach	NOT AUTHORIZED			
Circling	4500' (1573')	4800' (1873')	5700' (2773')	