

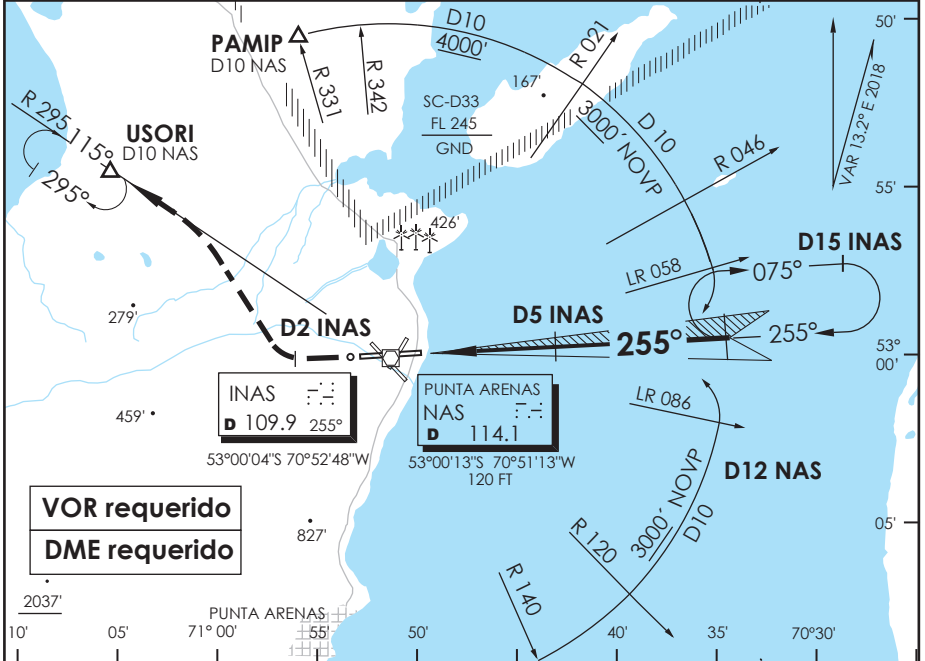
AP. C. IBAÑEZ DEL CAMPO
PUNTA ARENAS - CHILE

SCCI IAC 1
ILS Z Rwy 25

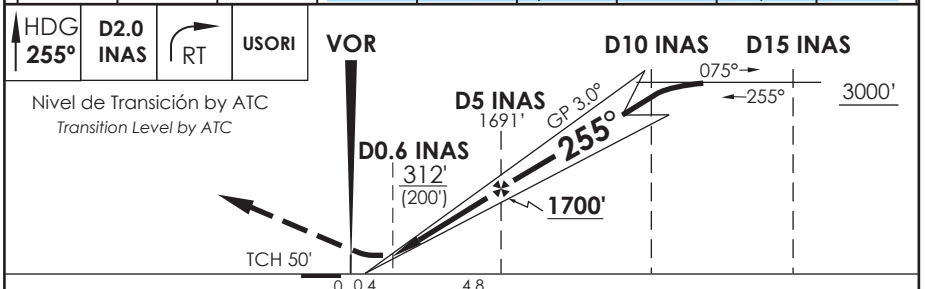
ACC PUNTA ARENAS Punta Arenas Center	123.9/128.1	TORRE PUNTA ARENAS Punta Arenas Tower	118.7	CONTROL TERRESTRE Ground Control	121.9
LOC INAS 109.9	FINAL APCH CRS 255°	MNM ALT D5 INAS 1700'	ILS DA(H) 312' (200')	AD Elev. THR 25 Elev. 139'	112'

APCH FRUSTRADA: Ascenso HDG 255° hasta D2 INAS, viraje derecha continuando ASC para 3000' e interceptar R0295 NAS VOR, DCT USORI, luego según CLR ATC.
 Missed Apch: Climb on HDG 255° until D2 INAS, right turn to continue climbing to 3000' to intercept R295 NAS VOR, direct to USORI, then according to ATC clearance.

4500 FT
MSA 25 NM NAS



VOR requerido
DME requerido



CATEGORIA	DIRECTO RWY 25 <i>Straight in RWY 25</i>				CIRCULANDO <i>Circling</i>	ALTN <i>Alternate Minimums</i>
	* ILS DA 312' (200')		* LOC WO GP MDA 380' (268')			
	ALSF-1	WO ALSF-1	ALSF-1	WO ALSF-1		
A					640' (501')	VER PAG. GEN 2.19
B	0.8 Km	1.2 Km	0.8 Km	1.6 Km	800' (661')	
C					960' (821')	
D			1.2 Km		4.4 Km	

* WO INAS DME PROC NA / Procedure not authorized without INAS DME

Veloc. Terrestre Kts	80	100	120	140	160
GP 3.0° FPM	425'	531'	637'	743'	849'
FAF to MAP 4.4 NM	2:18	2:38	2:12	1:53	1:39

DAS-7 / SECCION AIS-MAP