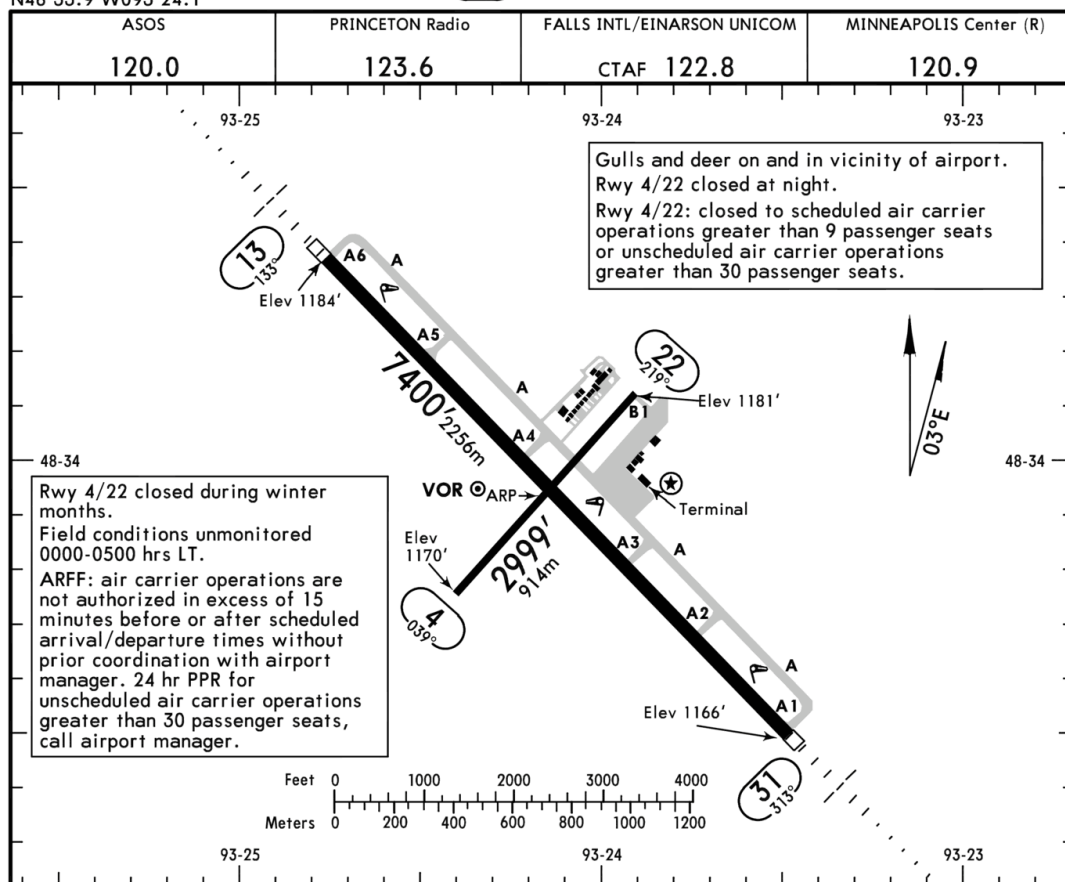


KINL/INL
Apt Elev 1184'
N48 33.9 W093 24.1

JEPPESEN INTERNATIONAL FALLS, MINN
13 MAY 22 (10-9) Eff 19 May
FALLS INTL/EINARSON



ADDITIONAL RUNWAY INFORMATION					
RWY		USABLE LENGTHS			WIDTH
		Threshold	Landing Beyond Glide Slope	Take-Off	
4					75' 23m
22					
13	① 31 ② HIRL ② MALSR PAPI-L (angle 3.0°)		6350' 1935m 6496' 1980m		150' 46m
① Porous friction course overlay. ② Activate on 122.8.					
TAKE-OFF					
All Rwys					
Adequate Vis Ref			STD		
1 & 2 Eng	1/4		1		
3 & 4 Eng			1/2		
TAKE-OFF OBSTACLE NOTES: Rwy 4, tree 251' from DER, 542' left of centerline, 48' AGL/1225' MSL. Trees beginning 343' from DER, 296' left of centerline, up to 72' AGL/1249' MSL. Rwy 13, vehicle on road 1004' from DER, 766' left of centerline, 1195' MSL. Pole 1091' from DER, 702' right of centerline, 33' AGL/1207' MSL. Trees beginning 1998' from DER, 774' left of centerline, up to 1233' MSL. Trees beginning 2176' from DER, 531' left of centerline, up to 60' AGL/1236' MSL. Rwy 22, tree 433' from DER, 273' left of centerline, 1199' MSL. Tree 786' from DER, 389' left of centerline, 1213' MSL. Tree 1144' from DER, 133' right of centerline, 1208' MSL. Rwy 31, tree 969' from DER, 751' left of centerline, 1236' MSL.					
FOR FILING AS ALTERNATE					
Authorized Only When Local Weather Available					
	ILS Rwy 31 COPTER ILS Rwy 31	COPTER LOC Rwy 31	RNAV (GPS) Rwy 13 RNAV (GPS) Rwy 31	VOR Rwy 13 VOR Rwy 31 LOC Rwy 31	ILS Rwy 13 LOC Rwy 13
A	600-2	800-2	800-2		NA
B					
C					
D			800-2 1/4		

CHANGES: Twy pavement at approach end Rwy 22 removed. © JEPPESEN, 2000, 2022. ALL RIGHTS RESERVED.
NAVIGRAPH CHARTS INTENDED FOR FLIGHT SIMULATION ONLY - NOT FOR NAVIGATIONAL USE

Chart linked to Navigraph account cmdmrnartin